



M I N I - B U I L D I N G

12

NEIGHBORHOOD  
FACILITY



까사 셀레스티나

# CASA CELESTINA

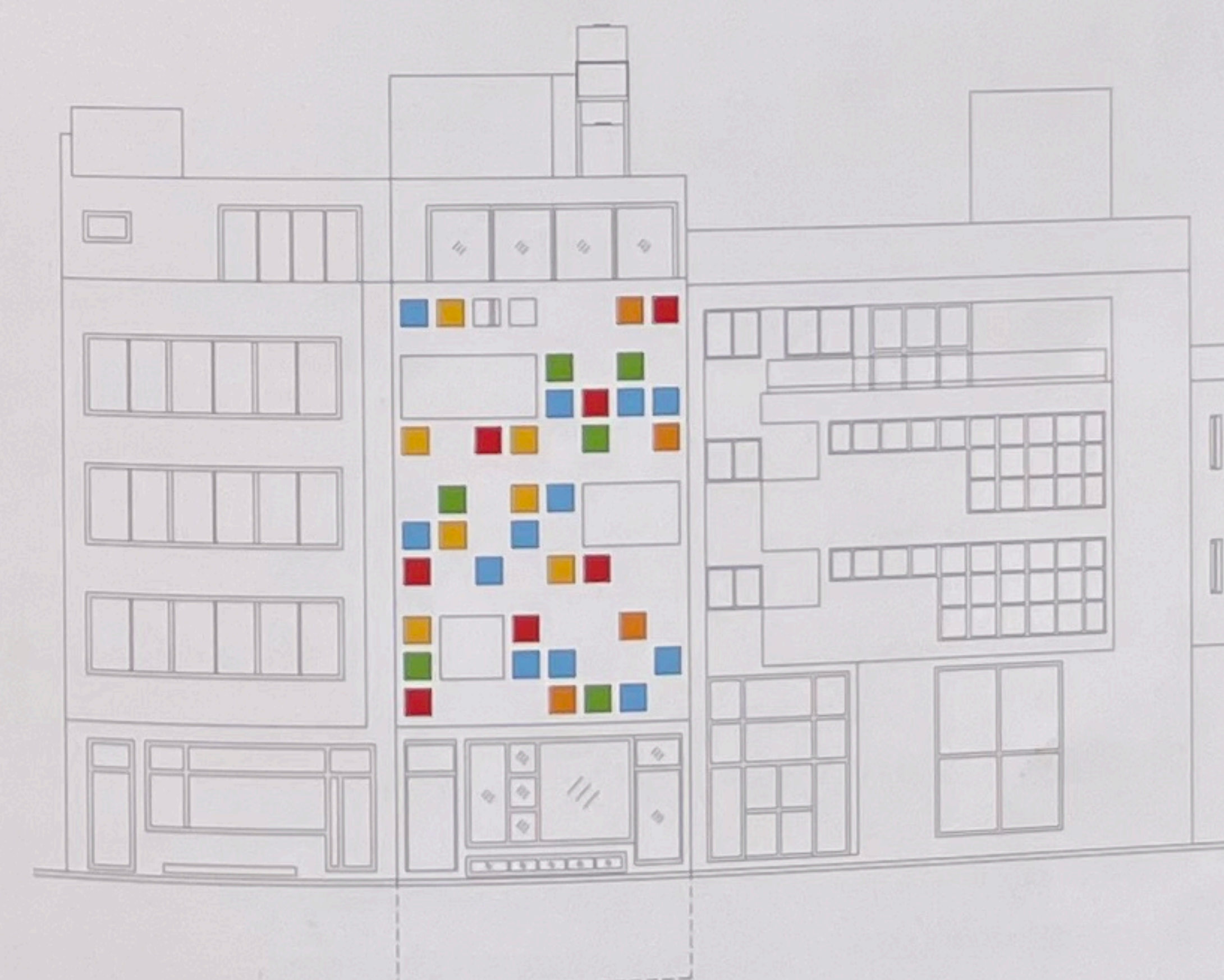
ARCHITECT : RAMOSCASTELLANO ARQUITECTOS / ELOISA RAMOS, MORENO S. CASTELLANO

**THE PROJECT IS A SIX-STORY** rental apartment building. On the ground floor 120m<sup>2</sup> for commercial and co-working use on two levels. The project tries to create a direct dialogue between the space and the street through the openings. The 6 apartments of 29m<sup>2</sup> each, plus the attic 60m<sup>2</sup>, are designed to allow space to be used in the most flexible and adaptable way.

The openings are designed to create an internal external relationship, filtering and selecting the views that contribute to calmness and internal concentration, and at the same time creating a positioning and size relationship with the architecture of the two lateral buildings.

The city of Mindelo on the island of São Vicente, Cape Verde, west Africa, is expanding rapidly with a constantly growing touristic flow. The 60m<sup>2</sup> plot is located in the city's center commercial street. A street that in the last 15 years has transformed its architecture, from residential, with traditional multi-colored one-storey houses, to small 4-storey apartment buildings, with the possibility of one meter overhang on the public road. How could we create an harmonious transition between the old existing, the new and the two existing buildings on the sides of the plot. Above all, as we could have conveyed through a 4-storey vertical facade, the same joy that was in traditional architecture, combining it with a new program. The chromatism of the windows has a direct relationship with the chromatic palette already present in traditional Cabo Verdian architecture, and the movement of the openings absorbs and transfers a dynamism and a dialogue with the street and above all with the stereometry of the neighboring buildings. The internal furniture follows the same logic of flexibility and transformability of the space that architecture manifests, creating a harmonious and dynamic set of relationships between space and human being. The feeling that you live within the space is calm within a constant moving stream.

**Location** Mindelo, São Vicente Island, Cape Verde **Use** Commercial & Apartment **Site area** 67m<sup>2</sup> **Built area** 390m<sup>2</sup> **Gross floor area** 81m<sup>2</sup> **Completion** December 2020 **Project manager & design** Eloisa Ramos, Moreno S. Castellano **Structural engineer** Ilidio Alexandre **Carpentry & furnitures** Sig. Adriano Gomes **Contractor** Cipriano Tomas **Paintings** Moreno S. Castellano **Photographer** Sergio Pirrone



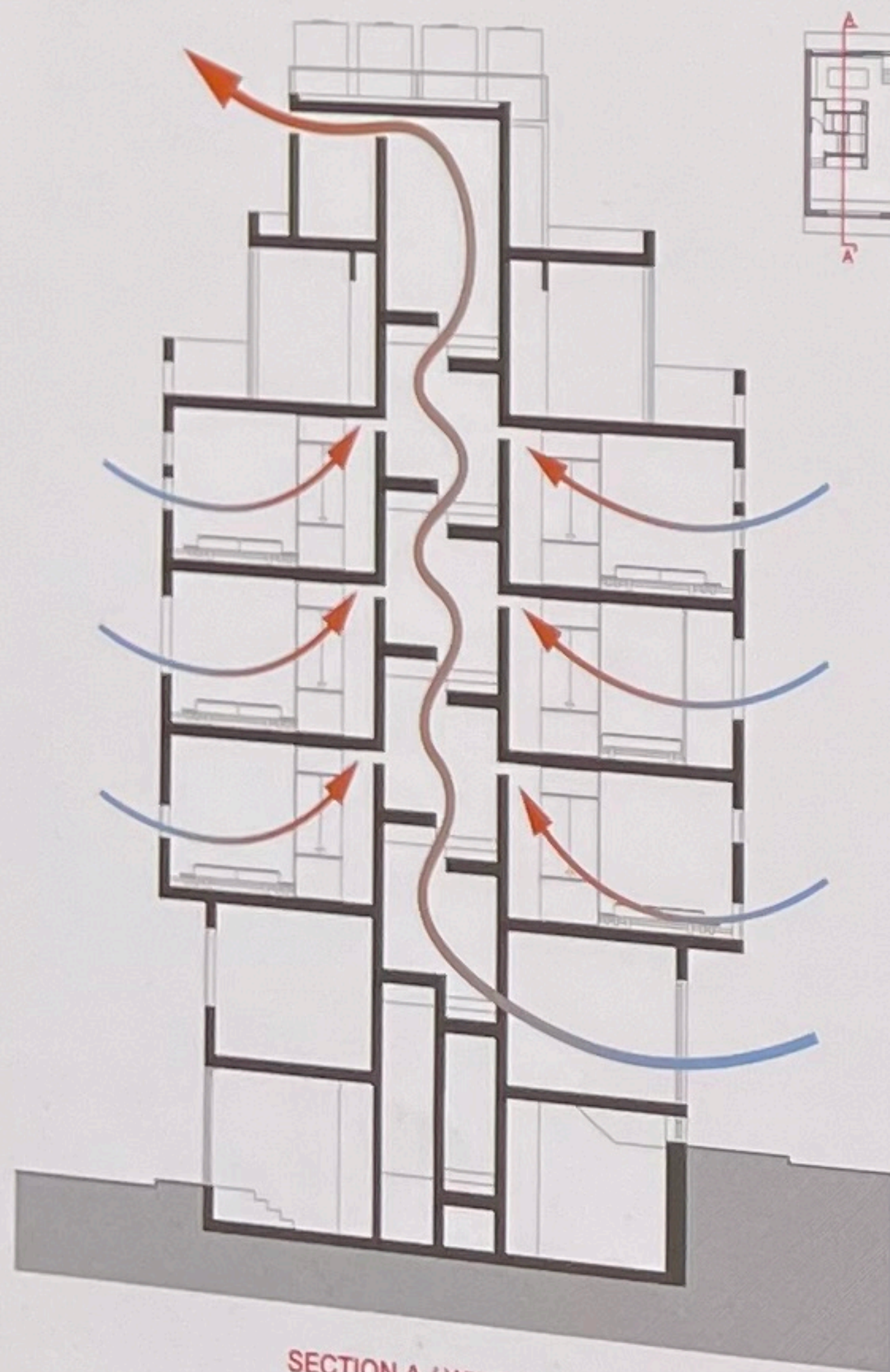
FRONT ELEVATION



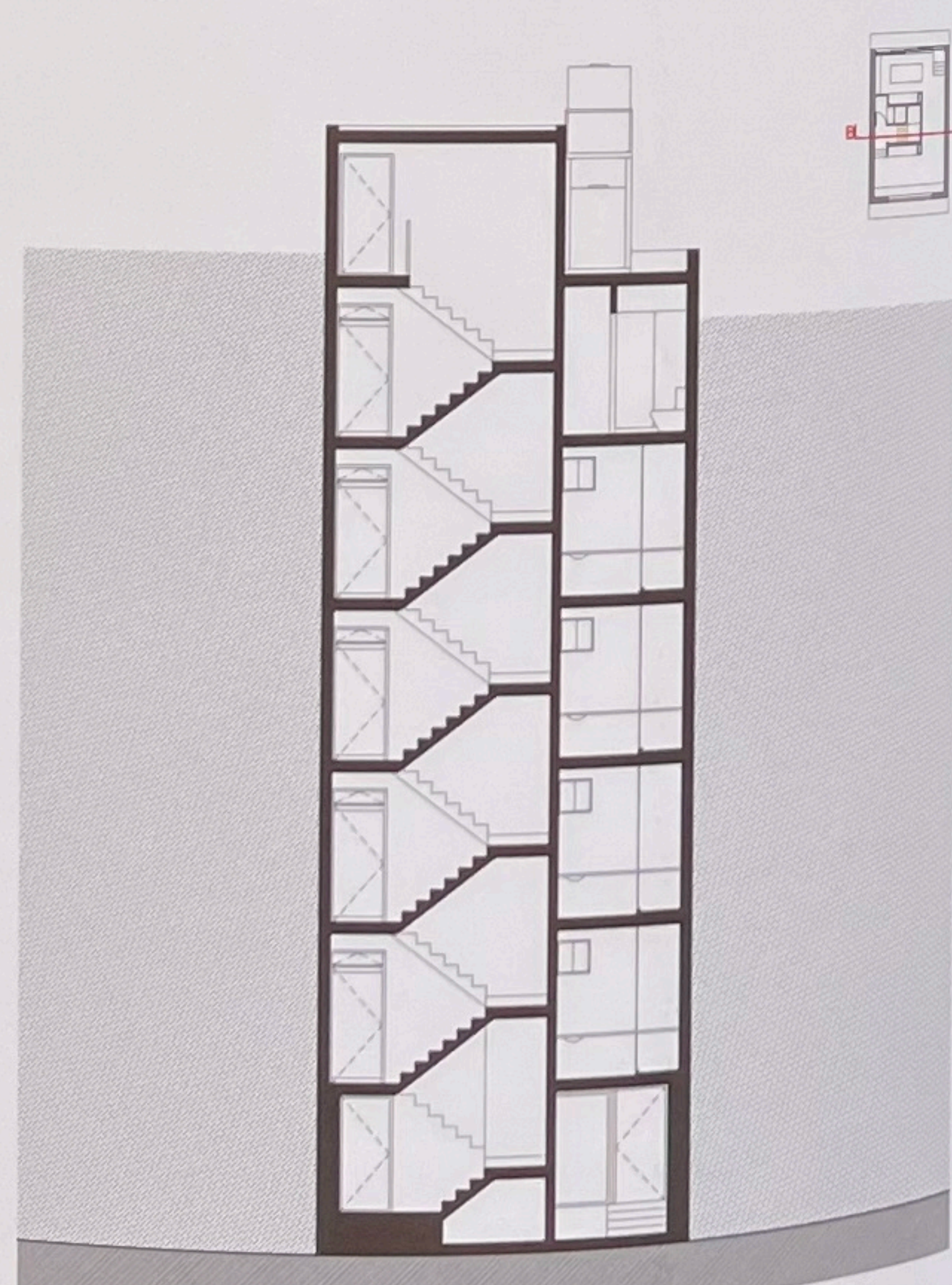
→ Exterior view → Exterior night view



1 Facade window



SECTION A / WIND FLOW



SECTION B

— The building back, office open view  
— Back view  
— Back view

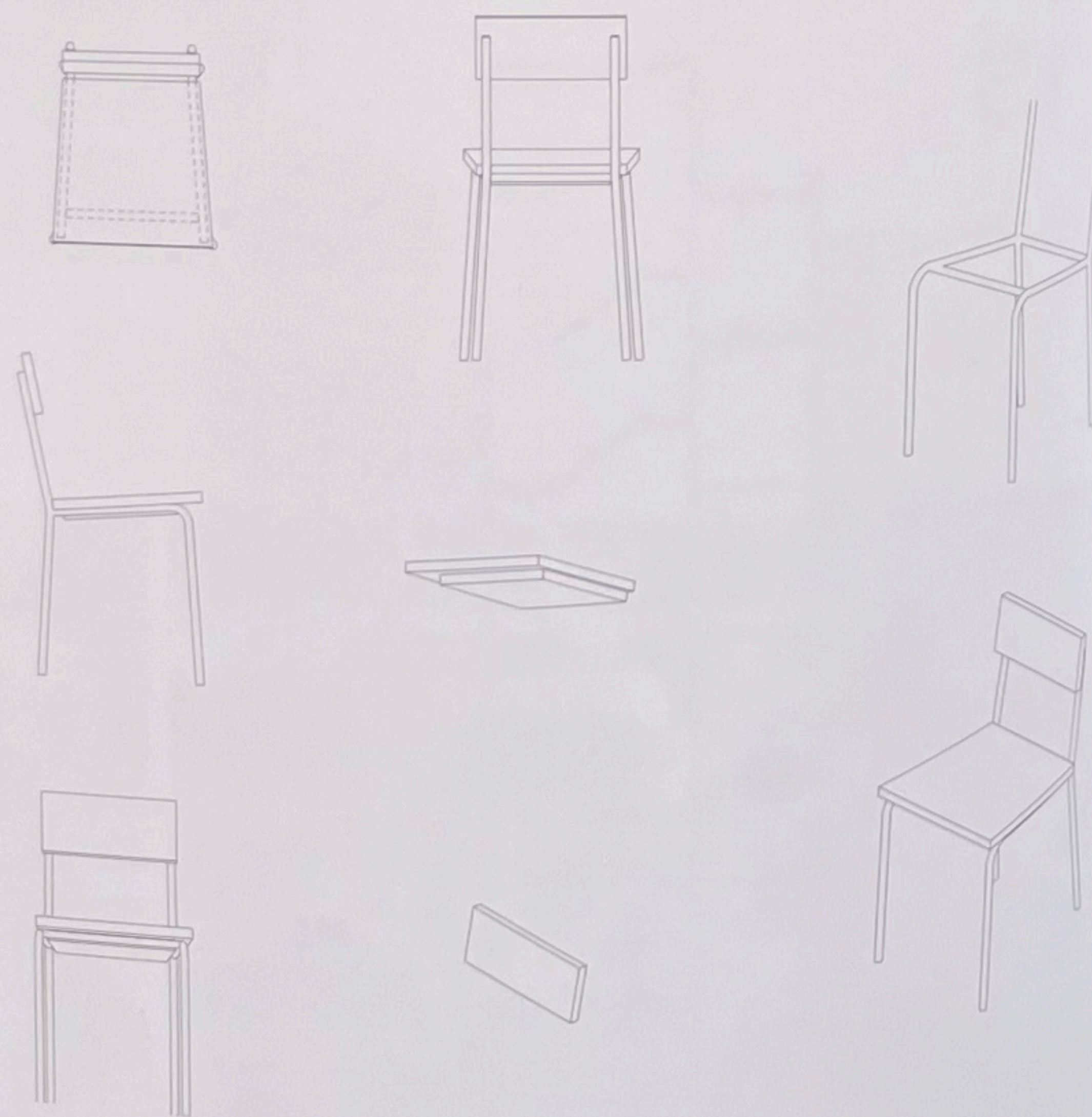




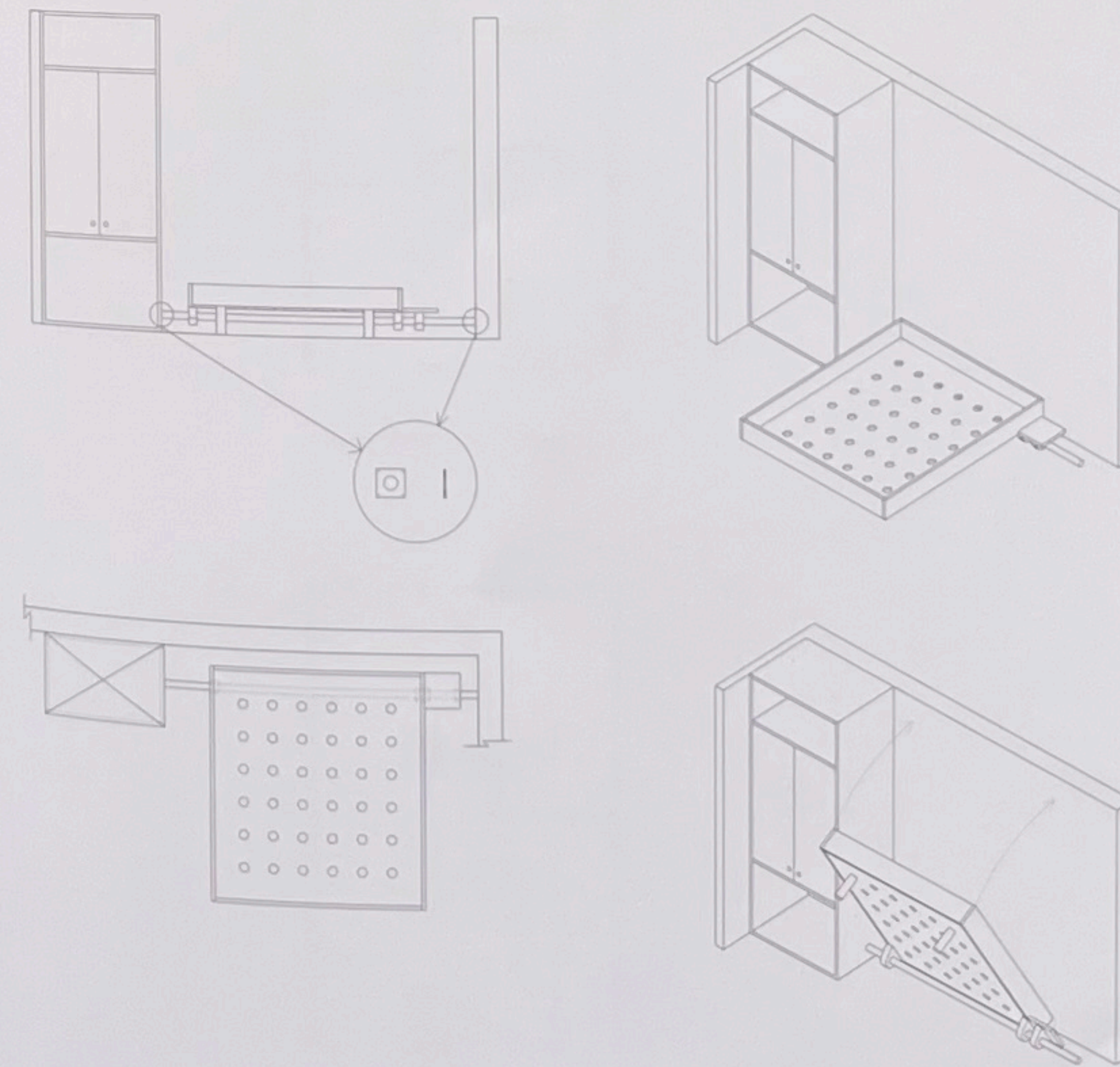
↑ Main entrance & Lobby    ↑ Main entrance & Lobby    ↓ Basement floor office



↑ 2nd floor space    ↑ 2nd floor bed system    ↓ 2nd floor bed system



CHAIR DETAIL

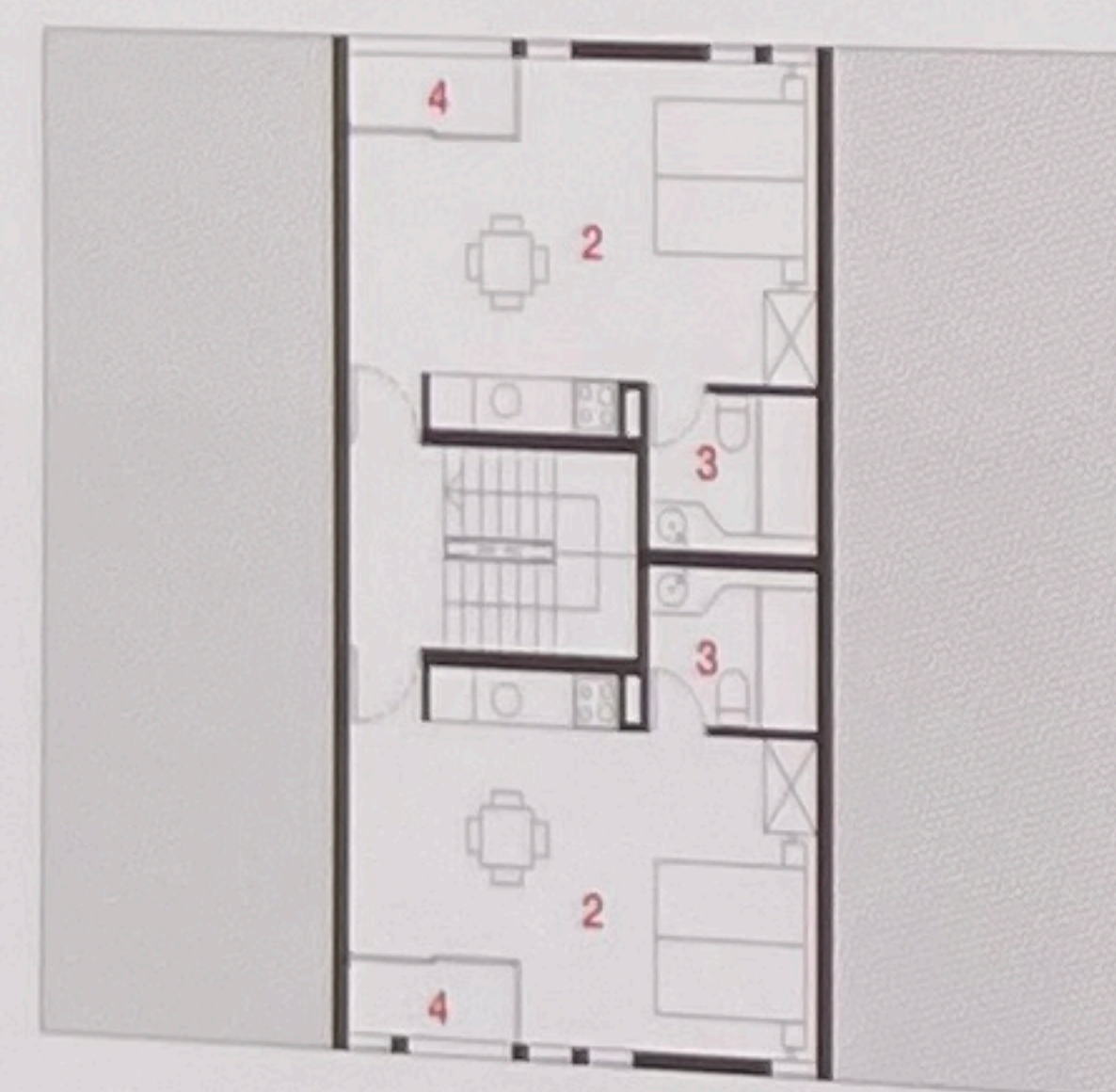


FURNITURE & BED DETAIL

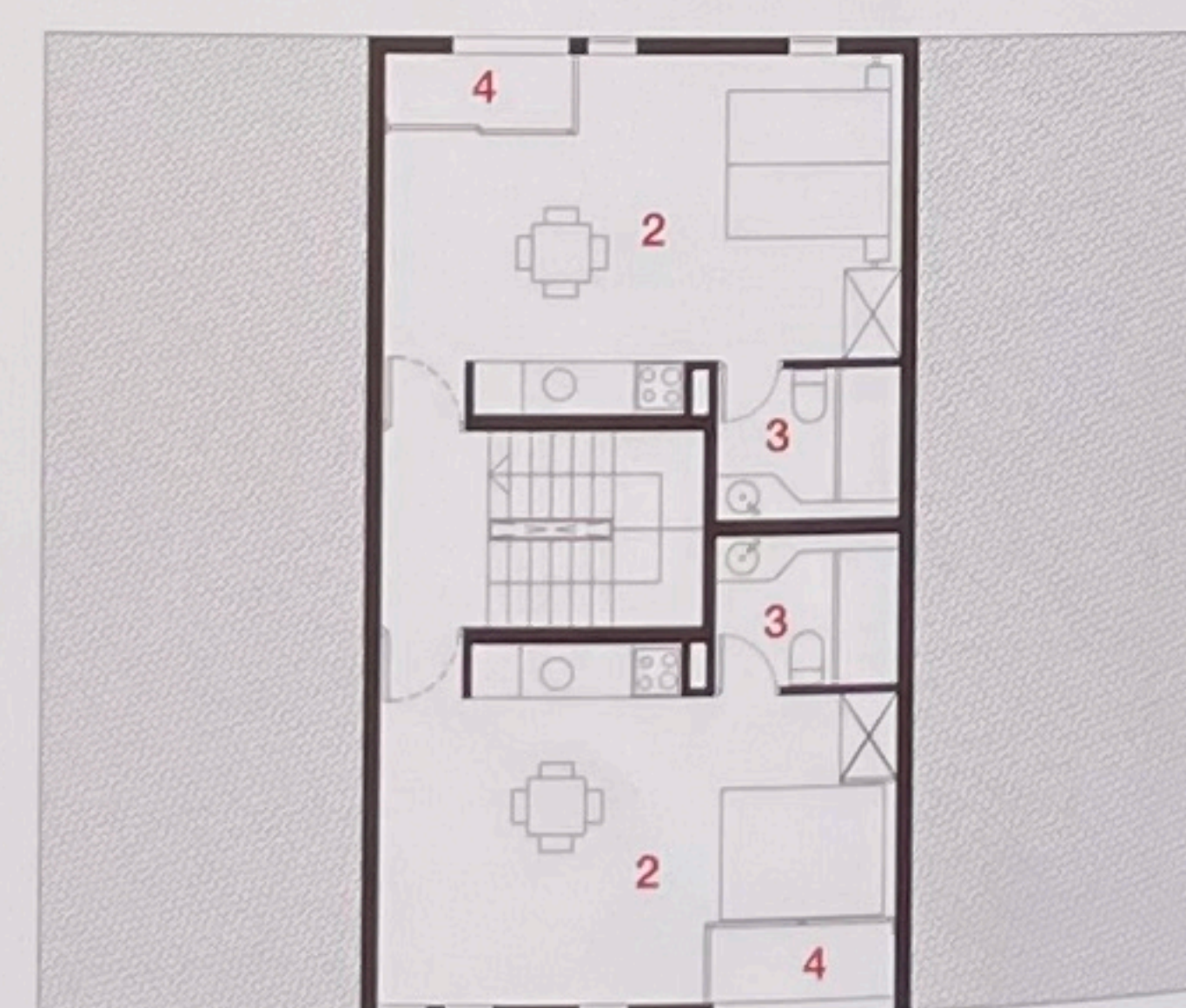




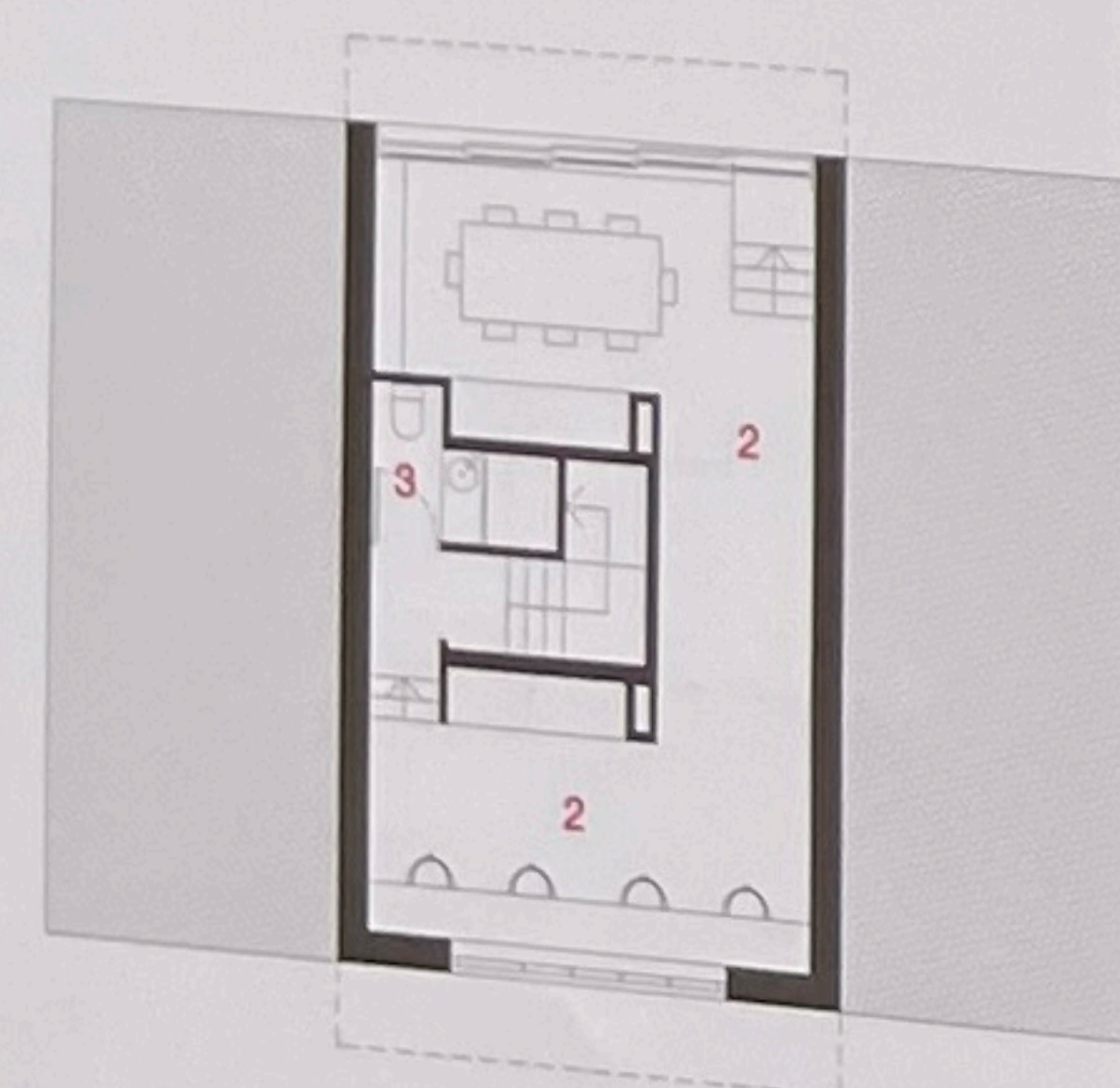
3rd floor space



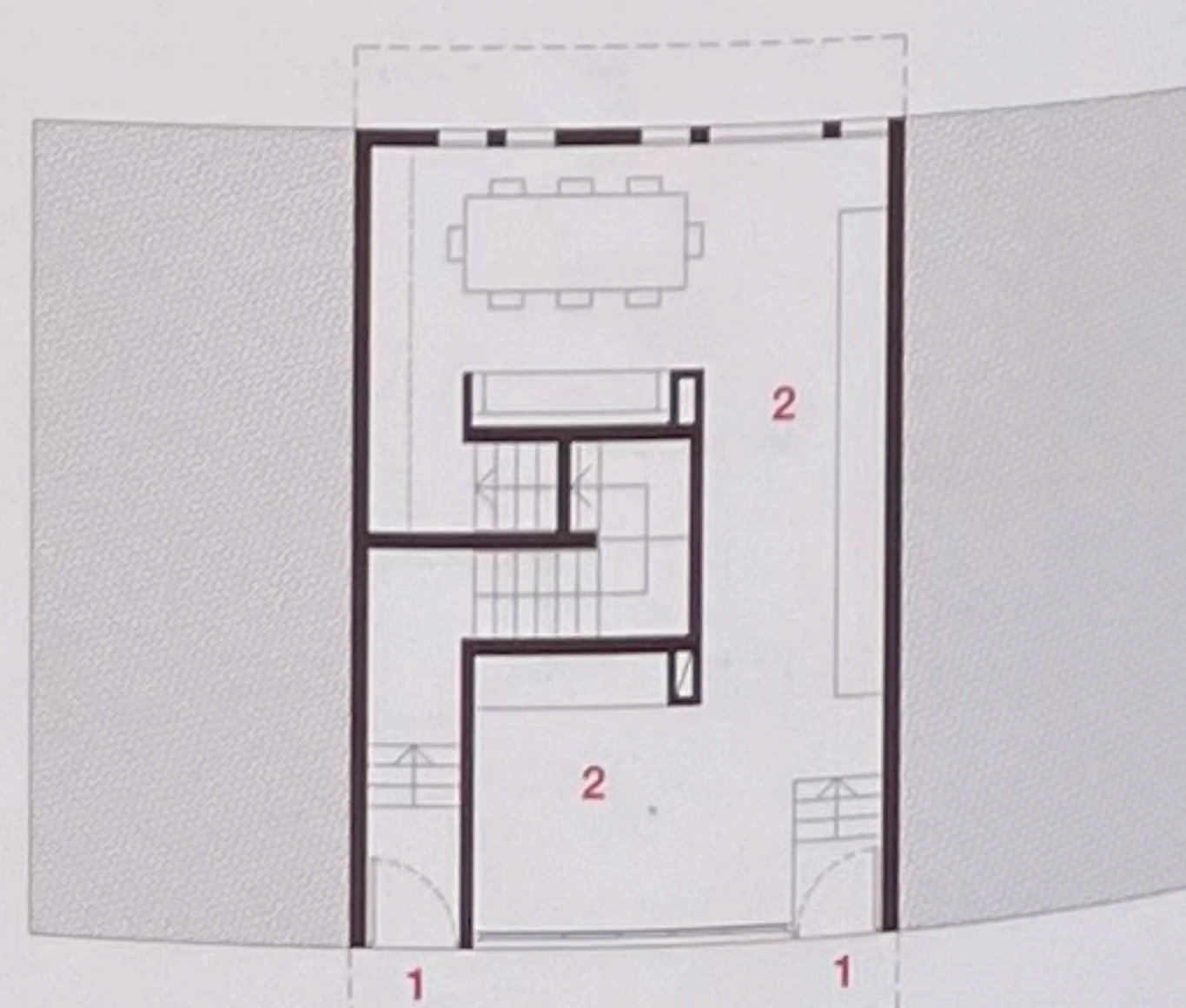
2NDFLOOR PLAN



3RD FLOOR PLAN



BASEMENT FLOOR PLAN



1ST FLOOR PLAN

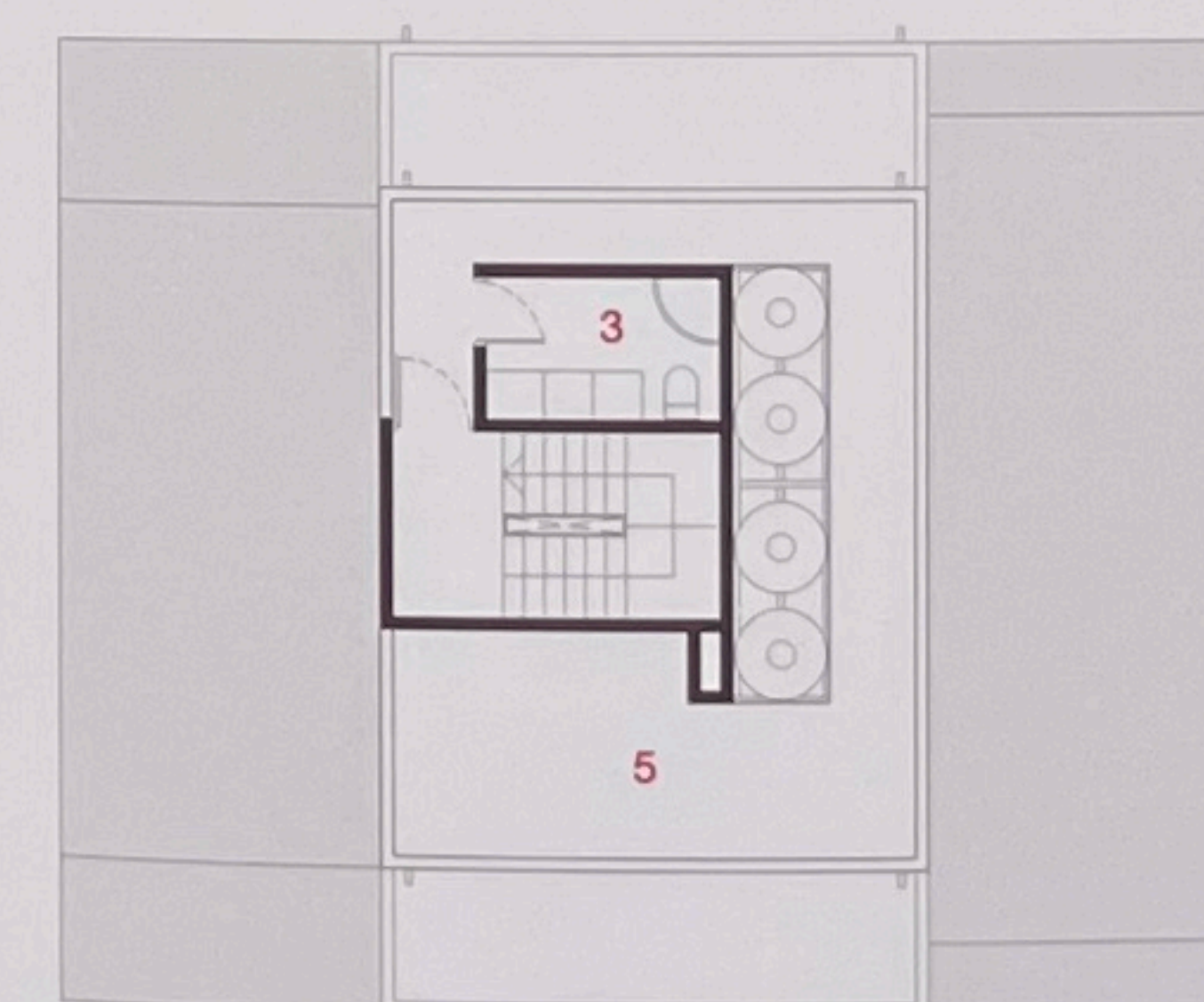


5th floor space 5th floor balcony 4th floor space 4th floor kitchen & balcony

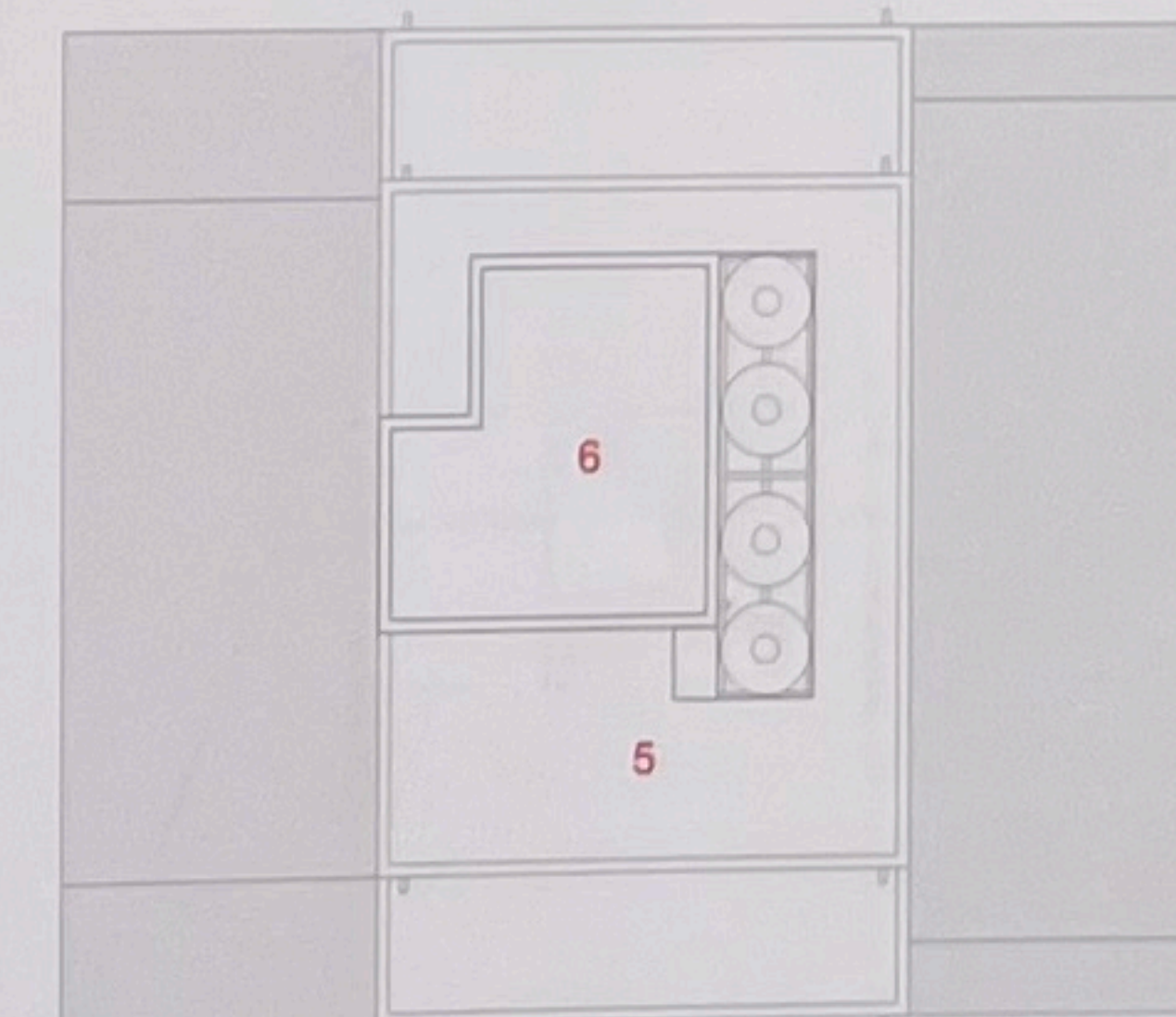
- 1 ENTRANCE
- 2 OPEN SPACE / OFFICE

- 3 TOILET
- 4 BALCONY

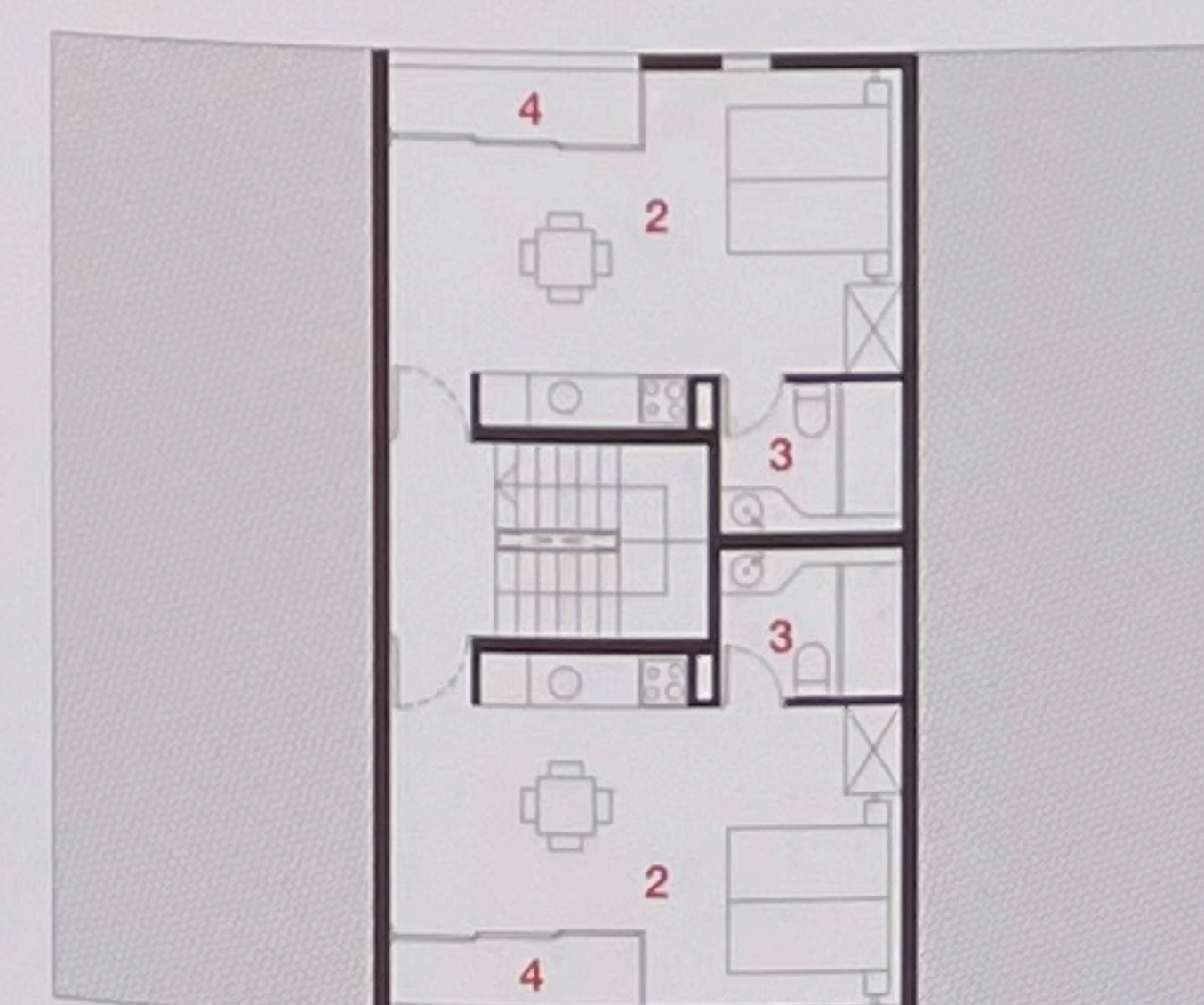
- 5 TERRACE
- 6 ROOF



ROOFTOP FLOOR PLAN



ROOF PLAN



4TH FLOOR PLAN



5TH FLOOR PLAN